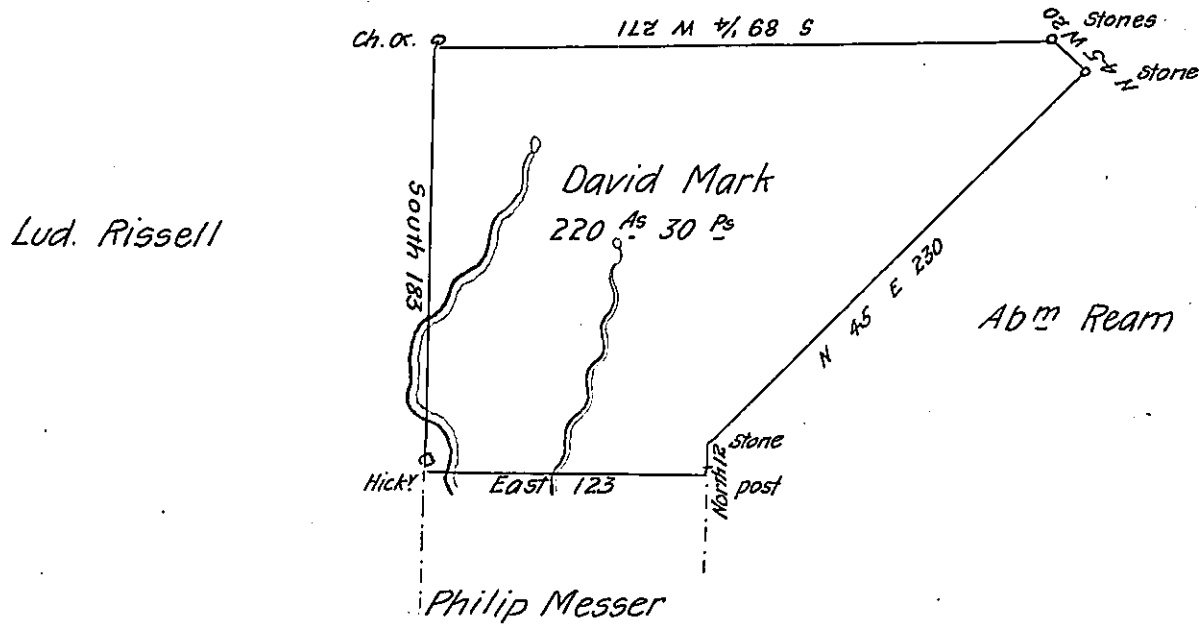


Mountain



A Draught of a tract of land situate in Haines township
 Centre County containing two hundred and twenty acres thirty perches
 and the usual allowance of Six P. Cent for roads &c^a surveyed for David
 Mark February 11th 1802 in pursuance of a warrant dated Jan^y ~~March~~
 18th 1802

James Harris D.S

To Samuel Cochran Esquire
 Surv^t Gen^l of Pennsylvania

IN TESTIMONY that the above is a copy of the original remaining on file in
 the Department of Internal Affairs of Pennsylvania, made
 conformably to an Act of Assembly approved the 16th day of
 February, 1833, I have hereunto set my Hand and caused
 the Seal of said Department to be affixed at Harrisburg,
 this first day of December 1905

James D. Brown
 Secretary of Internal Affairs.